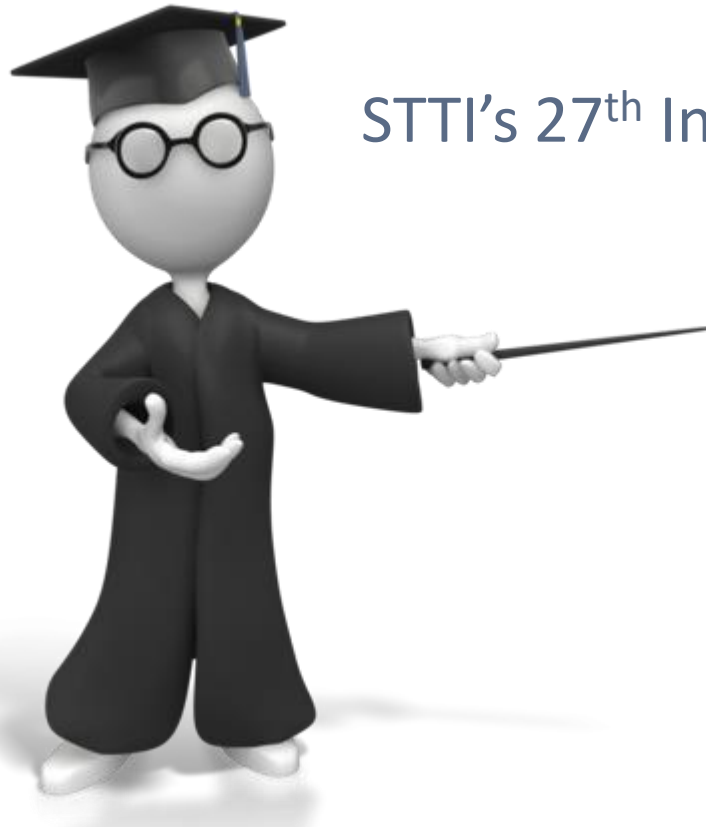


An Evidenced-Based Orientation Course for an Online MSN Program



STTI's 27th International Nursing Research Congress
Cape Town, South Africa

Dr. Nancy Cameron

July 21-25, 2016

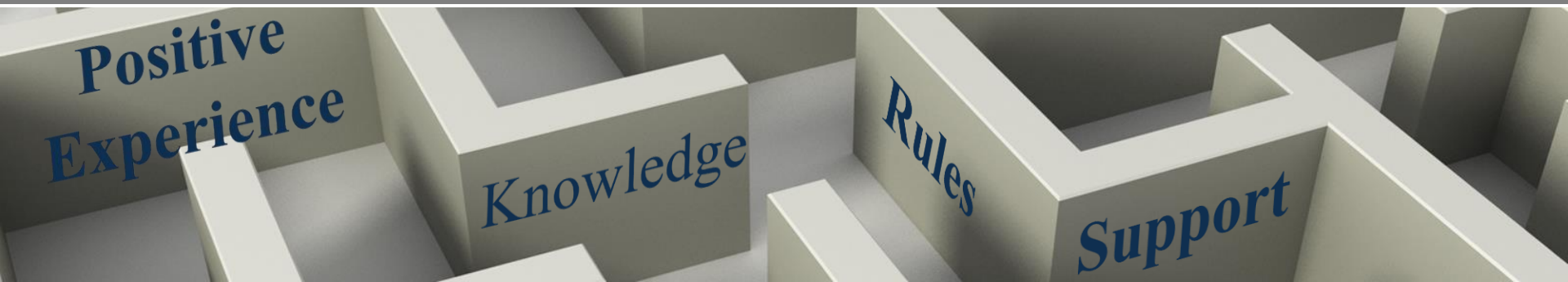
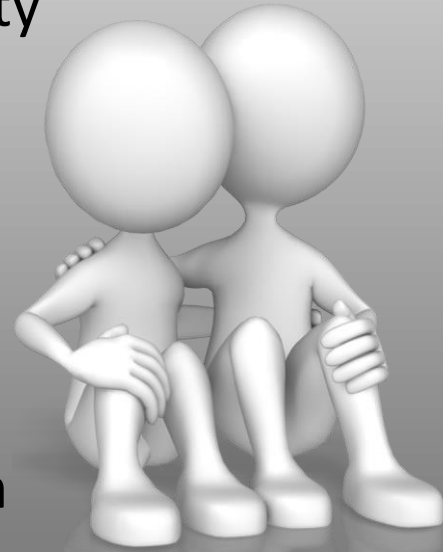




**Where do I go? What do I do? Who do I ask?
How do I....? When do I....?**

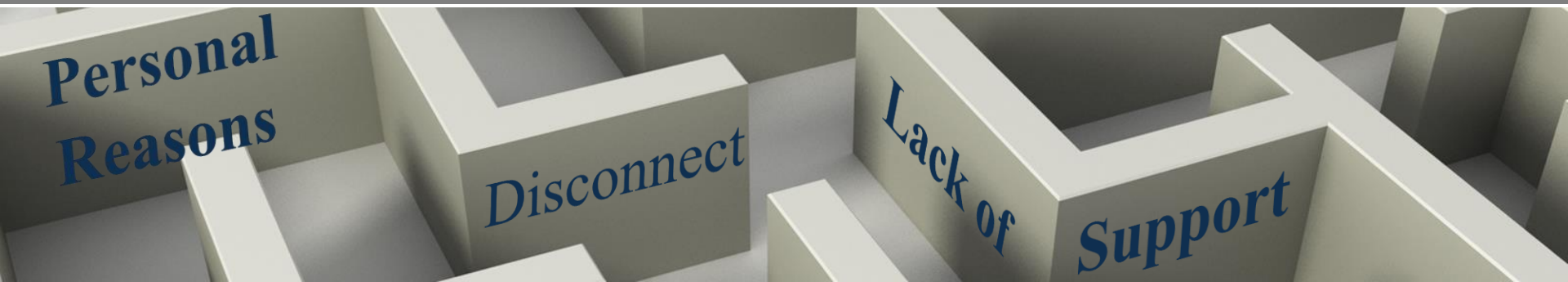
Common Student Needs

- Positive social experience with students and faculty
- Course delivery system understanding
- Asynchronous participation understanding
- Requirements of e-learning
- Requirements of graduate and program education
- Evidence of institutional commitment through excellence in advising and online resource access and availability



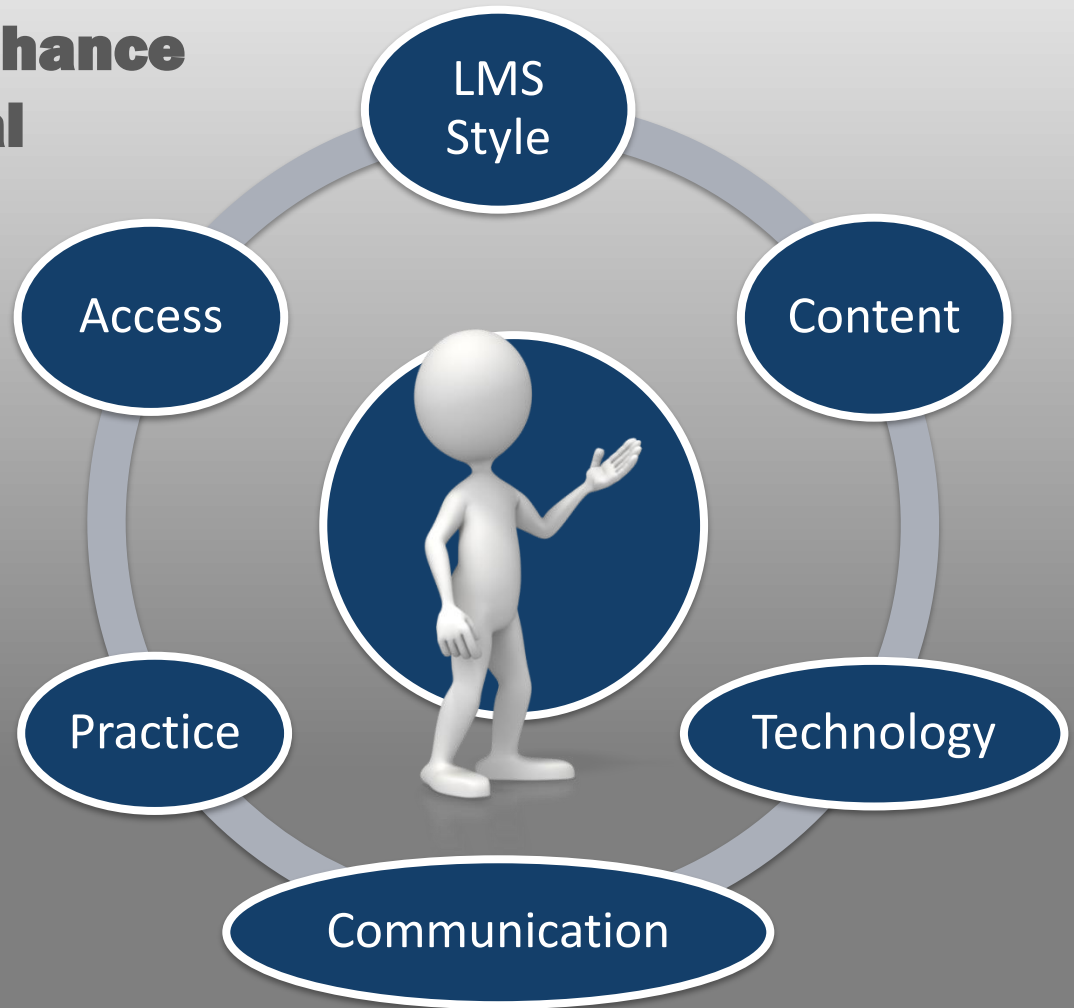
Student Reported Reasons for Withdrawal

- Personal
 - financial, work, family, health
- “Disconnect” between
 - anticipatory expectations of program and
 - realities of online graduate school
- Perceived lack of support by institution and/or faculty
 - Essential program information
 - Technology instruction and proficiency
 - Communication



Course Concepts to Enhance Success Potential

- **LMS style**—same as online course
- **Content**—common student needs
- **Technology**—similar to that of classes
- **Communication**—student/student and student/faculty
- **Practice**—upload, download, quizzes, grades, links
- **Access**—rapid response from faculty and links to resources



Pilot Project Evaluation:

Student Interviews

- Improved knowledge of online study, resources and program expectations.
- Increased proficiency with LMS.
- Increased communication and access to students and course faculty
- Increased access to university resources
- Marked decrease in overall anxiety



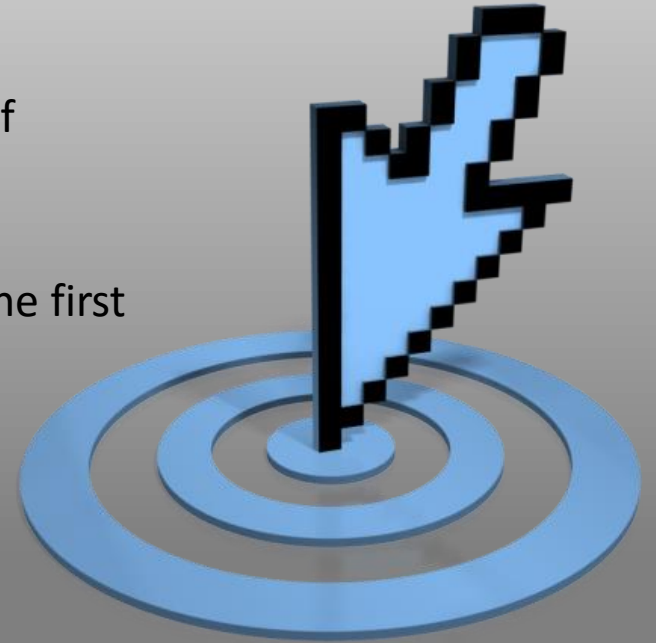
Outcomes and Next Steps

Student development of realistic expectations, sense of community, and practiced proficiency in the LMS.

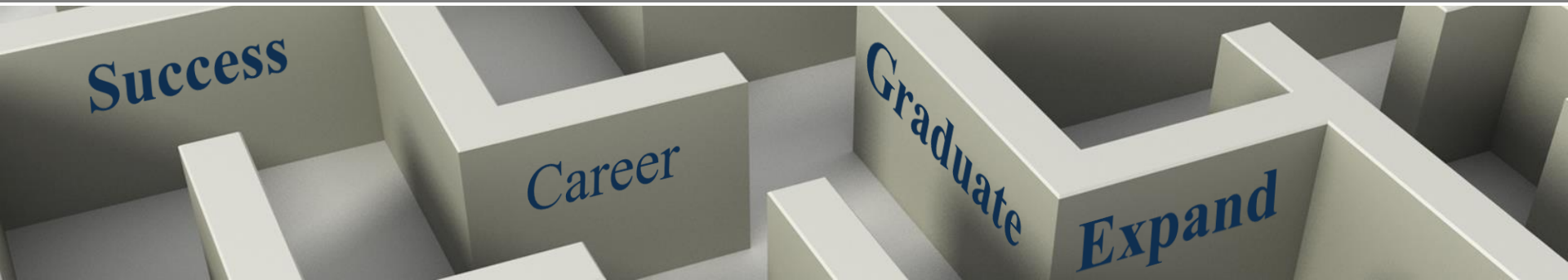
Improved ability to focus on course subject matter in the first few weeks of the first semester.

Some students are still using the orientation site to communicate with other students.

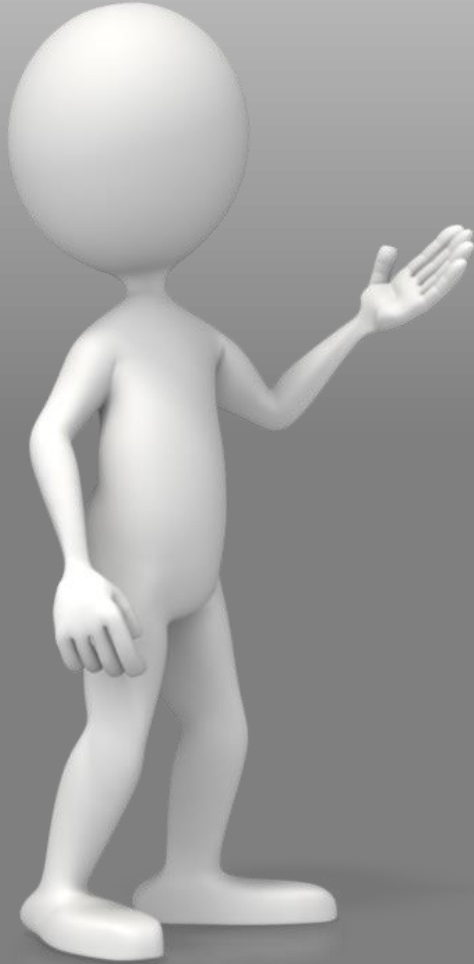
Next....require orientation course for all newly admitted students.




The Ultimate Goal



Questions? More Information?



CAMERONNG@ETSU.EDU

Linked : Nancy Cameron

